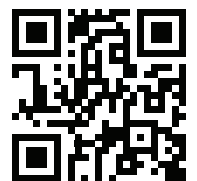




INTRODUCING THE EDM 101



To learn more, visit:
cmwtech.com/edm101/

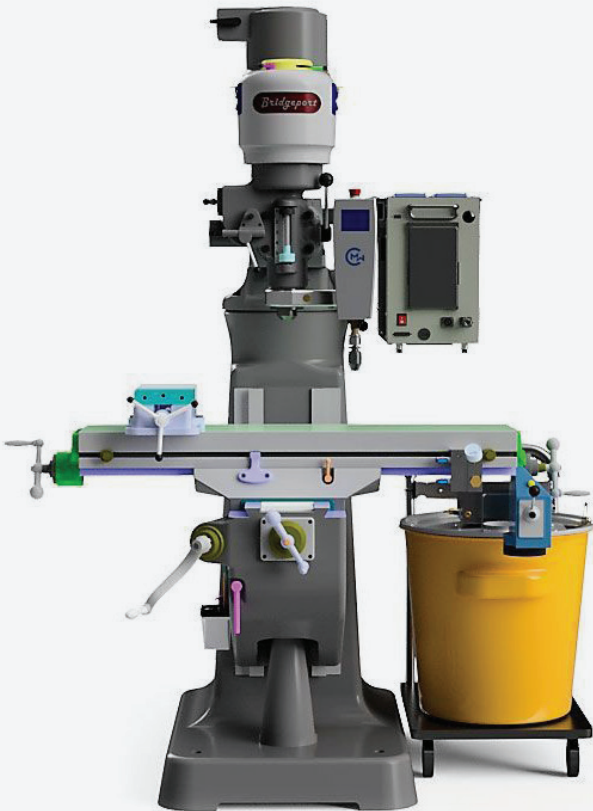
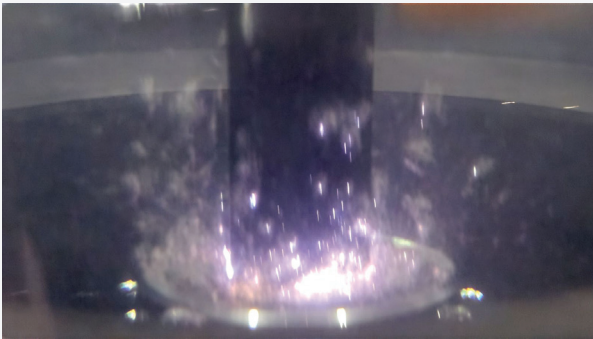
Your Cost-Effective Solution for Tap Extraction and Sinker Work

The ultimate solution for removing broken drills, taps, and studs with precision and ease. Designed by **CMW Tech**, the EDM 101 saves critical parts quickly and efficiently, making it an essential tool for any modern precision machine shop.

How EDM 101 Fits Into Your Workflow

The **EDM 101** is built to save time and money. If you already have EDM equipment, it complements your existing setup by tackling routine tasks—like broken tool removal—so your main EDM machines stay focused on high-value projects.

Its flexibility and ease of use make it ideal for machine shops, manufacturing facilities, technical schools, and engineering labs. From hex bolts to geometric shapes, the **EDM 101** delivers consistent results without adding complexity.



Technical Specs

OUTPUT

- 120 Volts DC programmable 0.3 through 20 Amps
- Complete On/Off Time programmable control

INPUT

- AC 220-230V -60hz Single Phase (20amps)

HEAD TRAVEL

- Z-axis 3.0" (76mm) with .001" jog resolution
- Theta 0-270 degrees with 0.1-degree resolution
- Full Z-Pecking control as well as Theta sweep

TOOL REMOVAL RANGE

- 0-80 to 1/2-20 equivalent to M1.6 - M13

ELECTRODE DIAMETER

- Round .015 to .5 inch (0.38 to 12.7mm)
- Hex up to 14mm, Keyways: to .375 square

HEAD

- Easy access ESTOP switch
- Integrated LCD displays active job and operational icons
- Quill mount Head to Bridgeport or optionally attach head to rigid structure or magnetic base

WORKING SPEED

- 0.003"-0.03"/min (0.076 - 0.75mm/min)
- Automatic EDM servo control
- Results depend on electrode, target material, and cross-section

POWER CONTROL UNIT

- Mount to Bridgeport with CMW Ram-Hanger or Tabletop

FLUSH AND FILTER

- Easy maneuver cart with 20-gallon tank; deionized or distilled water
- Two pumps: low-pressure side and adjustable core flush pressure up to 100 psi
- Two-stage economical filter system

USER INTERFACE

- Easy-to-use wireless Android Tablet
- Four operational modes: Setup, Job, Run + Info for feedback
- Full parameter control to create, edit, save, and retrieve jobs
- Real-time EDM progress with Auto-stop for depth control